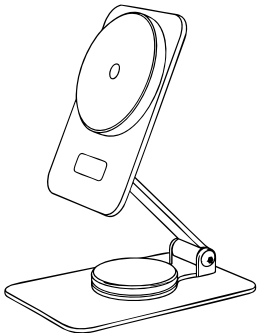


ELECDOV

User Manual

Foldable charging station



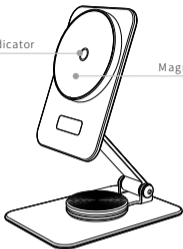
Model:Z5



Product Description

Charging indicator

Magnetic Induction Area

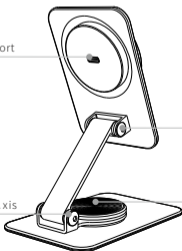


Type CP port

Up rotation axis

Down Rotary Axis

360 degree knob



Technical Specifications

Name: Foldable charging station

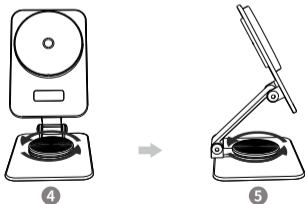
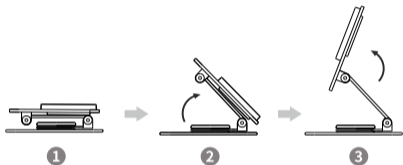
Executive standard: Qi

Conversion rate: $\leq 80\%$

Input: 9V/2A & above

Output: 15W

Size: 102.7(L)x72.7(W)x29.5(H)mm



Method of use

1. Follow the steps to open the folding part of the product.
Figure ① to ③
2. Rotate the upper part of the product to adjust the upper part
3 60 degrees. Figure ④ ⑤
3. When the power supply is connected, the product has
entered the power-on state.
4. Place the mobile phone with MagSafe wireless charging
function close to the magnetic charging area of the product.
The magnetic mutual attraction is fixed to the product,
automatically aligned with the charging position, and the
mobile phone enters the charging state.
5. Remove the device and restore the product to standby.

Safety Notice

1. Do not pull the power cord hard to avoid breaking or
falling off.
2. Do not disassemble or throw it into fire or water to avoid
short circuit leakage.
3. Do not use in severe high temperature, humidity or
corrosive environment to avoid leakage of damaged circuit.

Frequently Asked Questions

1. Charging is relatively slow

The size of the wireless charging current allowed by the mobile phone itself or the external receiving coil is not the same, or the application runs a large power consumption when the mobile phone is charging, it is recommended to reduce or close the application.

2. The phone charging is intermittent

If the charging current is not enough, please use a charging head (adapter) with sufficient power of 9V/2A or QC2.0 or higher.

3. Charging Fever

It is normal for the receiving coil or launching plate to heat up during wireless charging. It is recommended to adjust the charging position.

4. Charger doesn't work

Do not place metal objects or magnetic cards in the charging area. If the product overheats and does not work, remove the phone to cool down and try charging again.

5. Your phone or watch won't charge

If the receiving coil of the mobile phone or watch is faulty or the charging position is inaccurate, it is recommended to replace the receiving coil or repair it.

Warranty & Service

We hope you'll never need it, but if you do, our service is simple and welcoming.

Customer Service: support@elecdov.com | Business Cooperation: May@elecdov.com